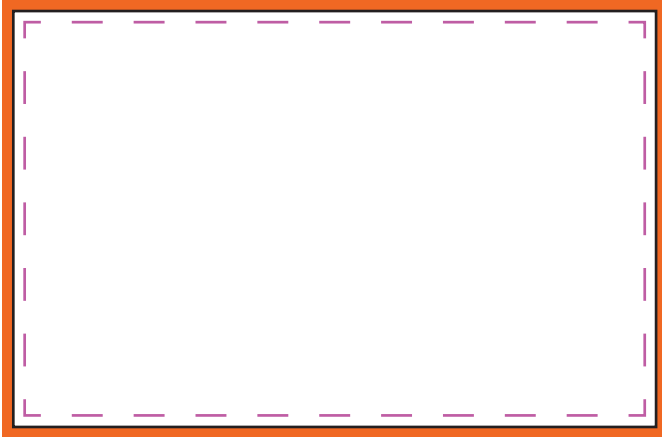


**FRONT** **Bleed area: 88x58mm**

Make sure your background extends to fill the bleed area to avoid nasty white edges

 **Trim: 88x58mm**

This is where your cards will be cut

 **Safe Area: 82x52mm**

Make sure important aspects of your design (like logos and text) are inside the safe area

**BACK** **Bleed area: 88x58mm**

Make sure your background extends to fill the bleed area to avoid nasty white edges

 **Trim: 88x58mm**

This is where your cards will be cut

 **Safe Area: 82x52mm**

Make sure important aspects of your design (like logos and text) are inside the safe area

**QR Code: 28mmx28mm**

We will generate and add your Tap2Connect QR code

**Please upload high resolution images or PDF artwork.  
Please ensure all text is converted to curves**

**For assistance with your design please email [admin@tap2connect.uk](mailto:admin@tap2connect.uk)**